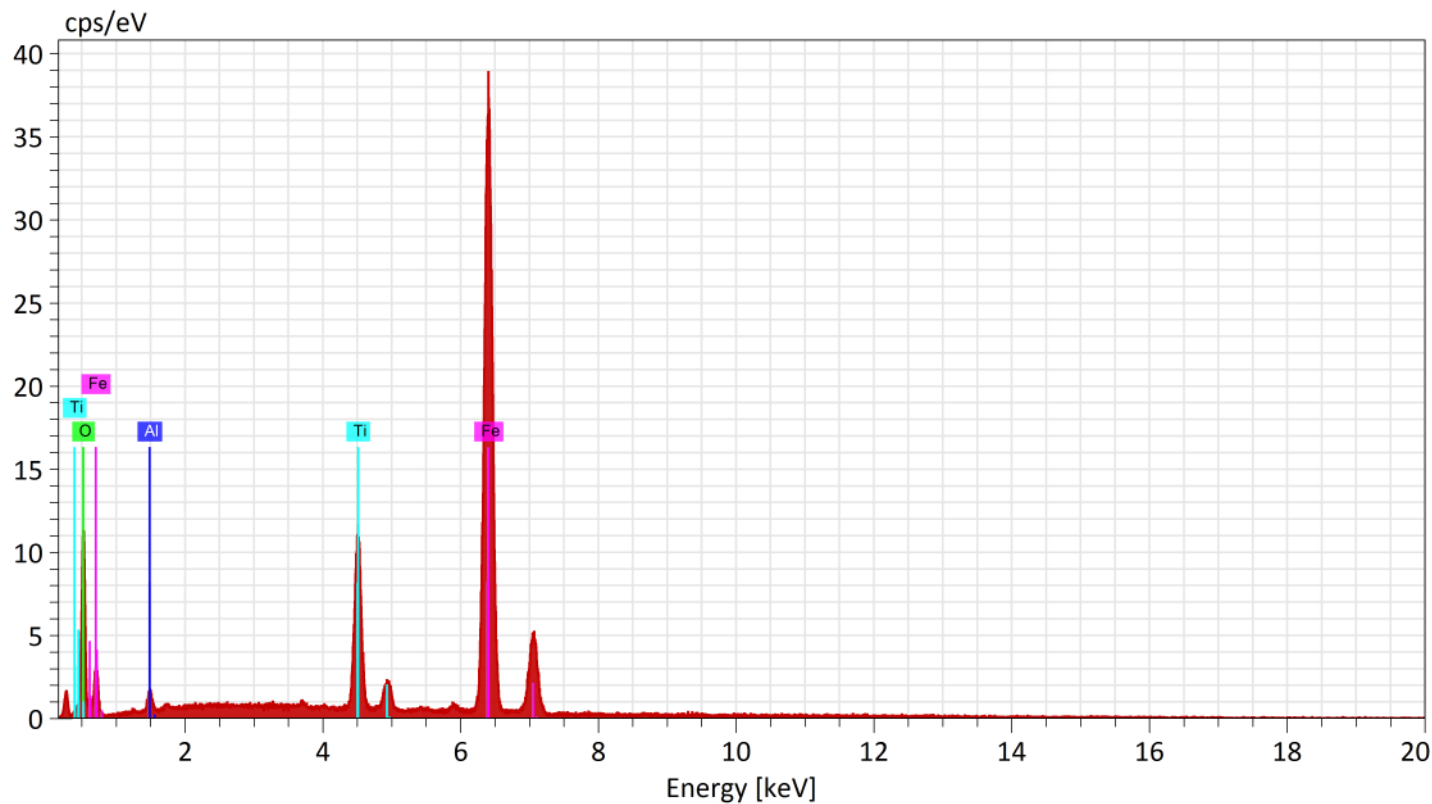


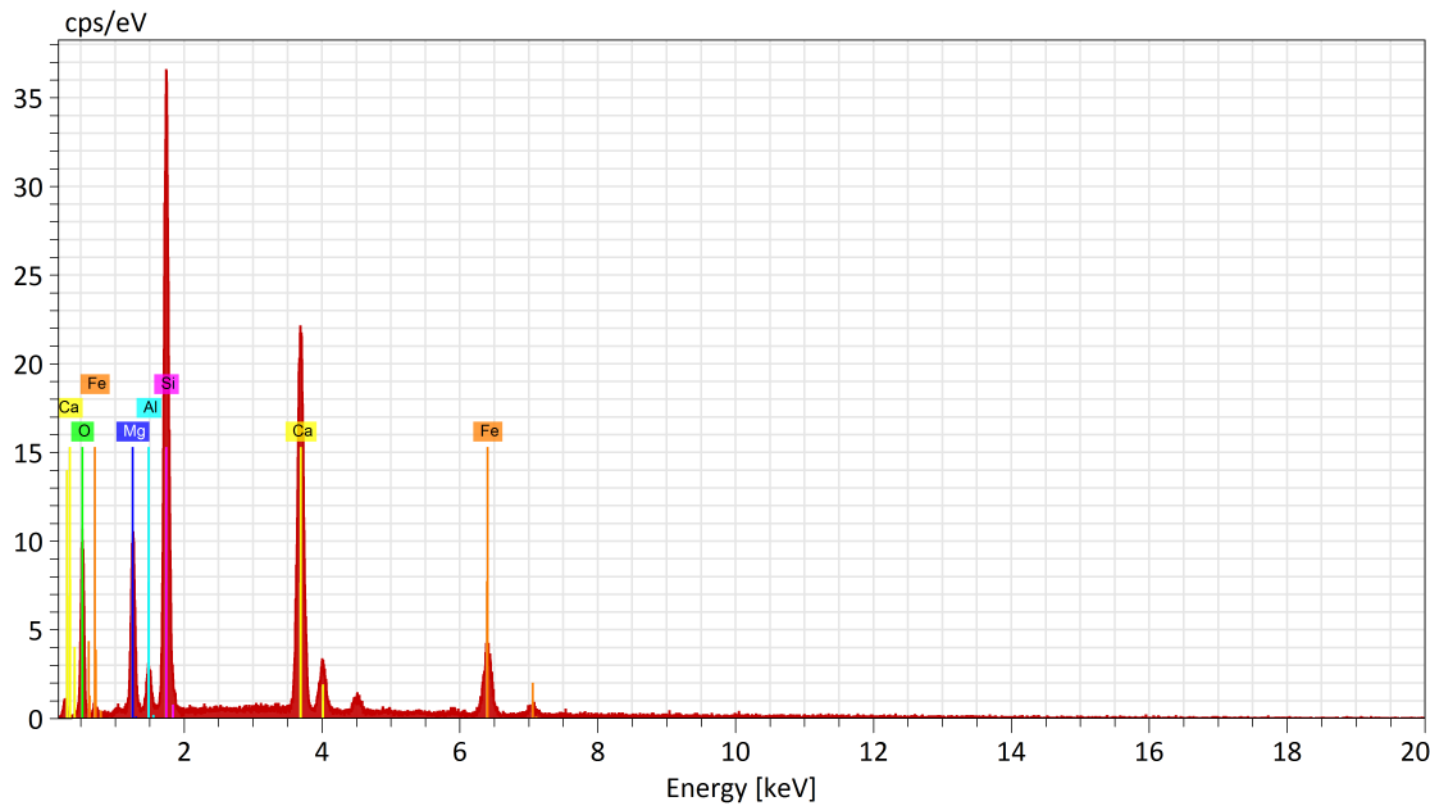
**SEM-EDS Lab, Palaeontology Division, Geological Survey Of India(SR)**  
**Hyderabad**



Normalized stoichiometric concentration [%]

Spectrum	Oxygen	Al <sub>2</sub> O <sub>3</sub>	TiO <sub>2</sub>	FeO
CMT/011/070.00	2.85	17.06	80.09	

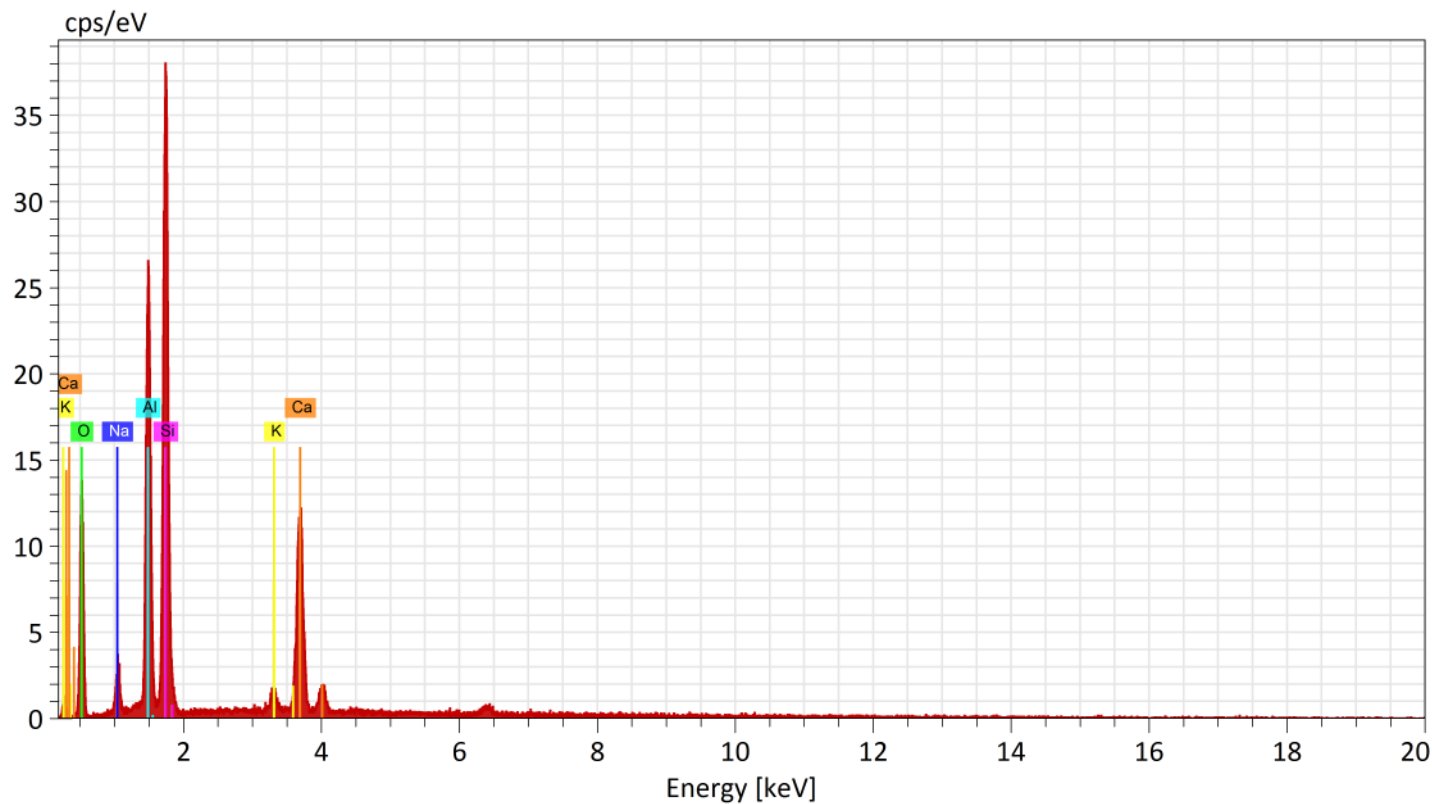
**SEM-EDS Lab, Palaeontology Division, Geological Survey Of India(SR)**  
**Hyderabad**



Normalized stoichiometric concentration [%]

Spectrum	Oxygen	MgO	Al2O3	SiO2	CaO	FeO
CMT/011/070.00		12.66	3.47	50.56	25.34	7.97

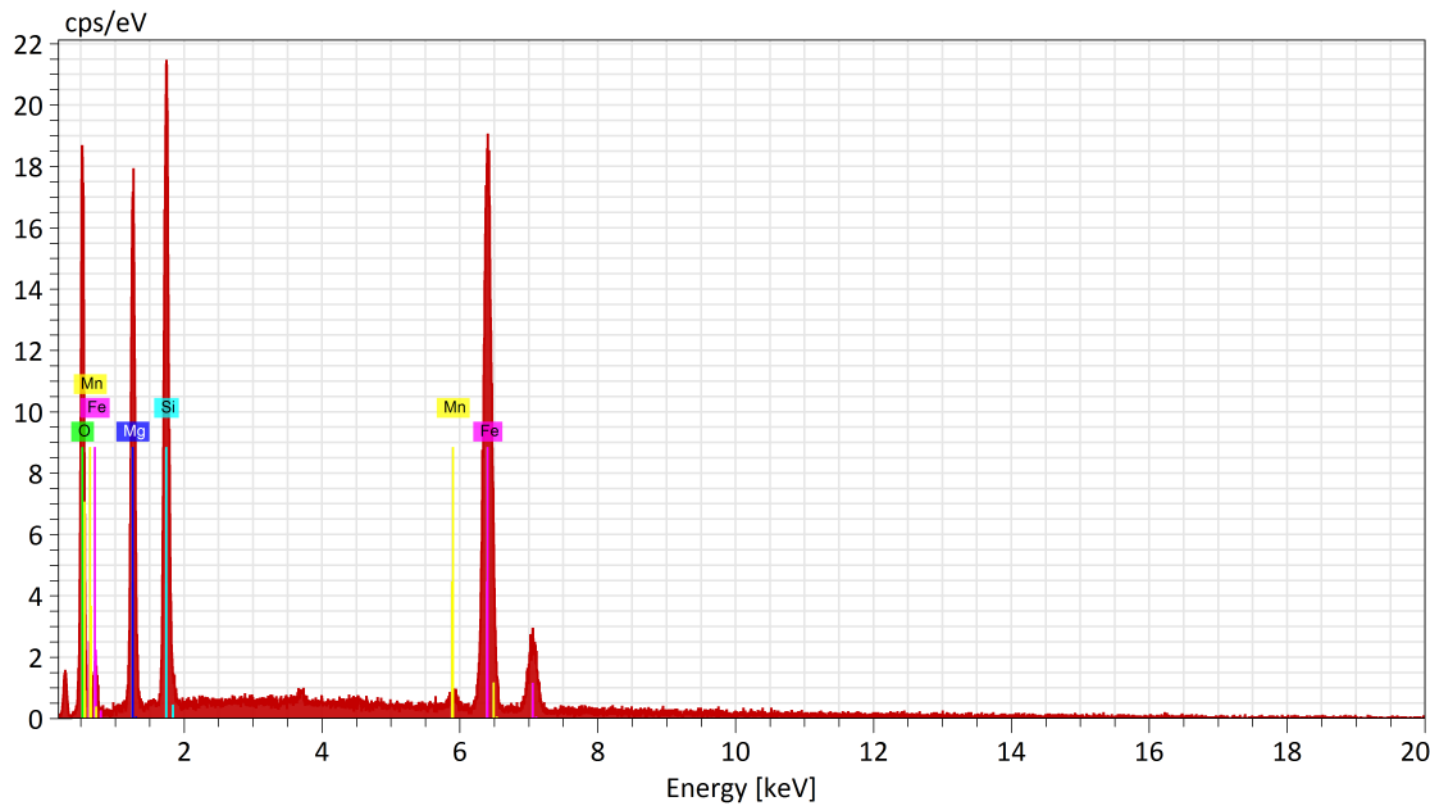
**SEM-EDS Lab, Palaeontology Division, Geological Survey Of India(SR)**  
**Hyderabad**



Normalized stoichiometric concentration [%]

Spectrum	Oxygen	Na <sub>2</sub> O	Al <sub>2</sub> O <sub>3</sub>	SiO <sub>2</sub>	K <sub>2</sub> O	CaO
CMT/011/070.00	4.79	24.82	54.62	1.09	14.69	

SEM-EDS Lab, Palaeontology Division, Geological Survey Of India(SR)  
Hyderabad



Normalized stoichiometric concentration [%]

Spectrum	Oxygen	MgO	SiO2	FeO	MnO
CMT/011/070.00	28.63	33.20	37.41	0.76	